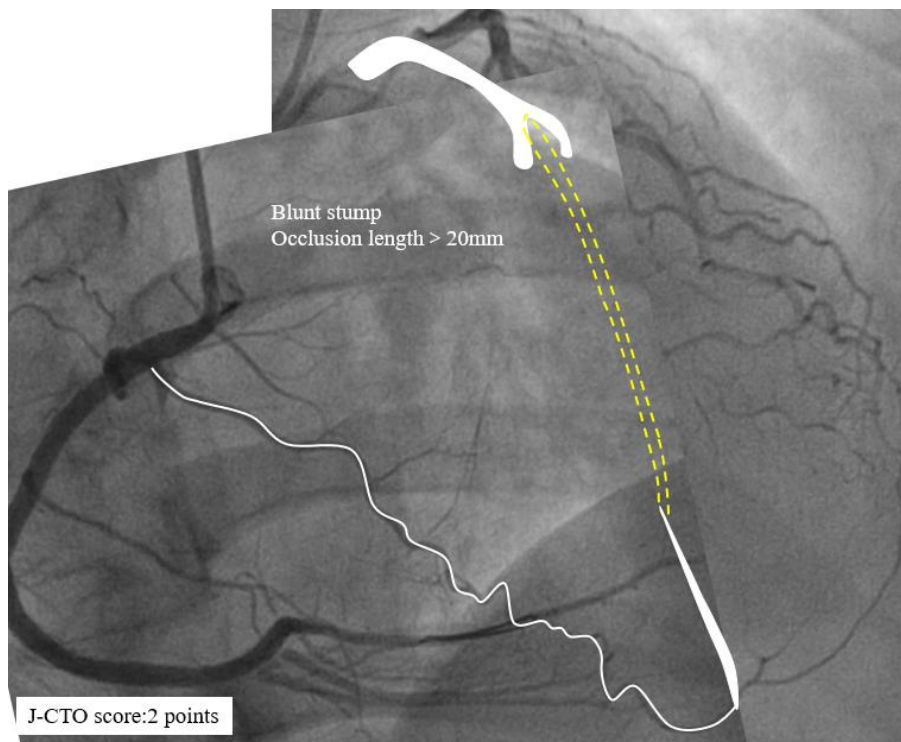


## CASE 01

---

- Female, 46y, angina for 2 weeks
- HTN (-), DM (-), LVEF:56%
- CAG: RCA (CTO,2017/06/10 PCI), Target vessel LAD(CTO)



### Strategy

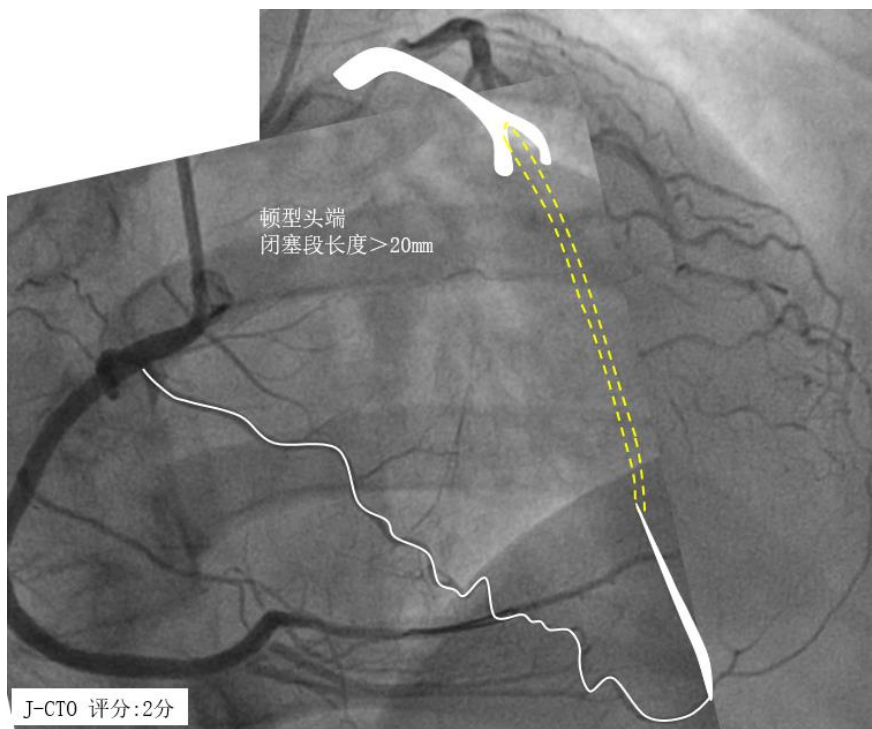
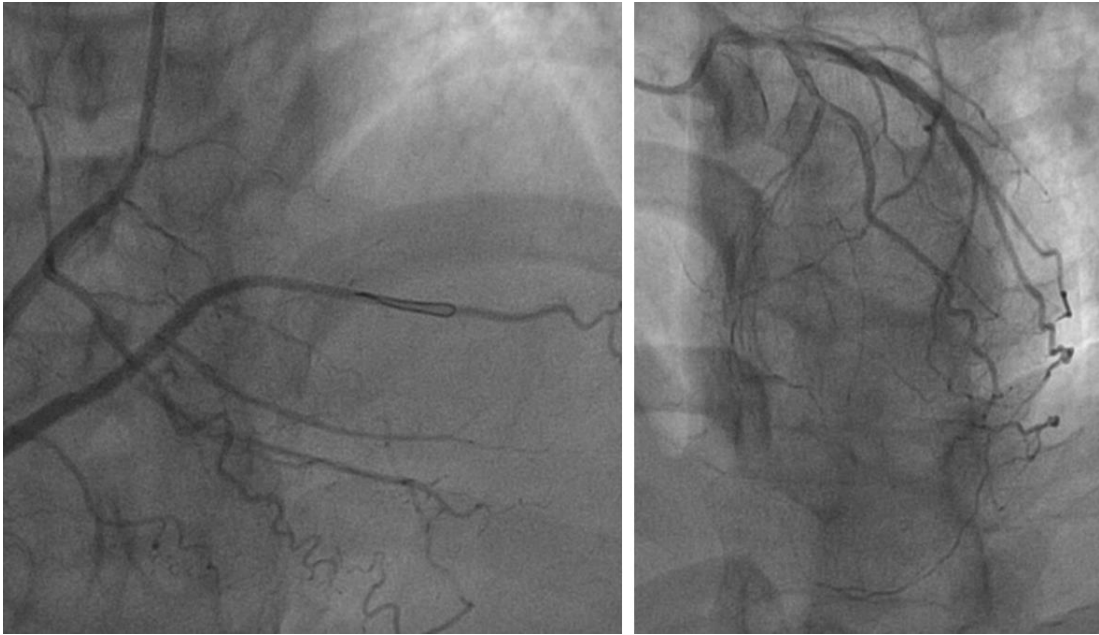
Equipment

Collateral Channels

CTO Technology

## CASE 01

- 女性, 46 岁, 胸痛 2 周余
- 高血压(-), 糖尿病(-), LVEF: 56%
- 冠脉造影结果: RCA(CTO, 2017/06/10 PCI), 目标血管 LAD(CTO)



### 介入策略

器械

侧支循环选择

技术