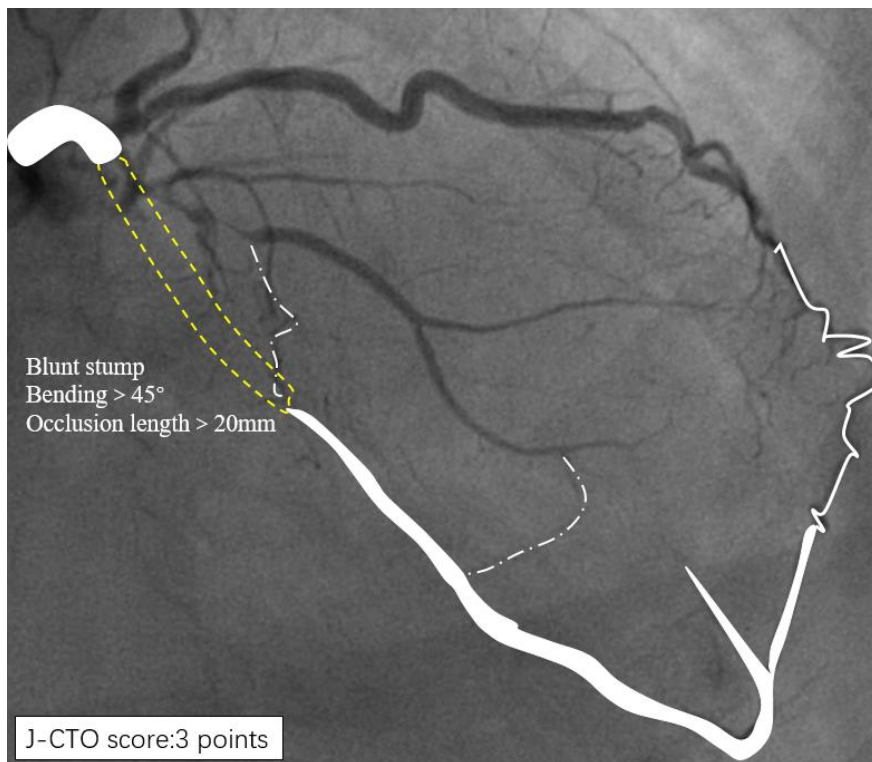
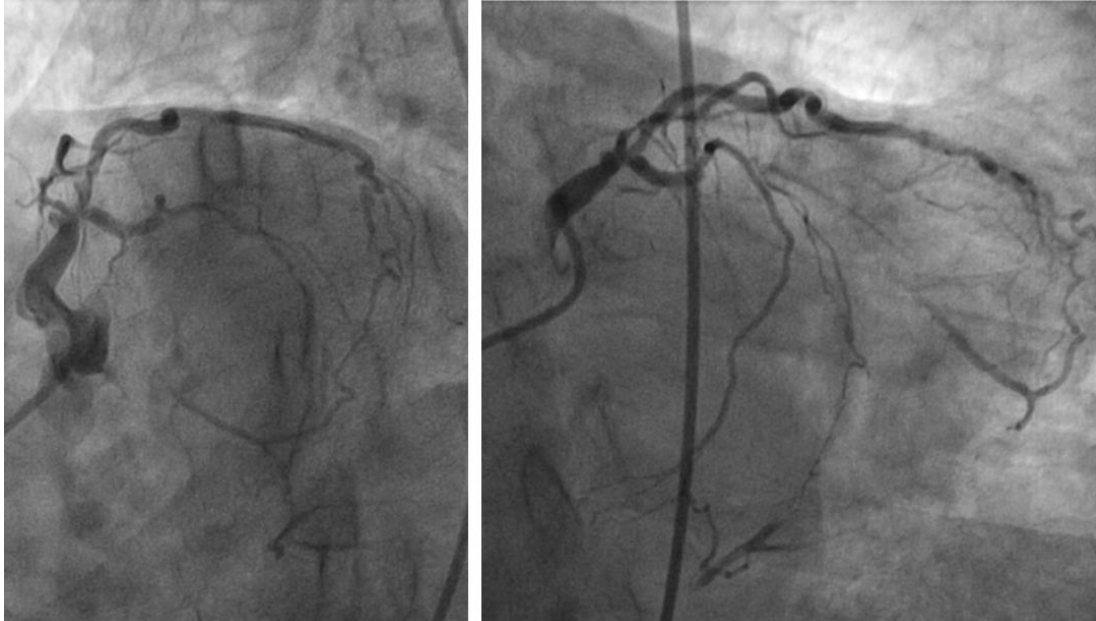


## CASE 05

- Male, 81y, angina for 1 month
- HTN (+), DM (+), LVEF:72%
- CAG: RCA (95-99%,2017/02/23 PCI), LCX(CTO), **Target vessel LAD(CTO)**



### Strategy

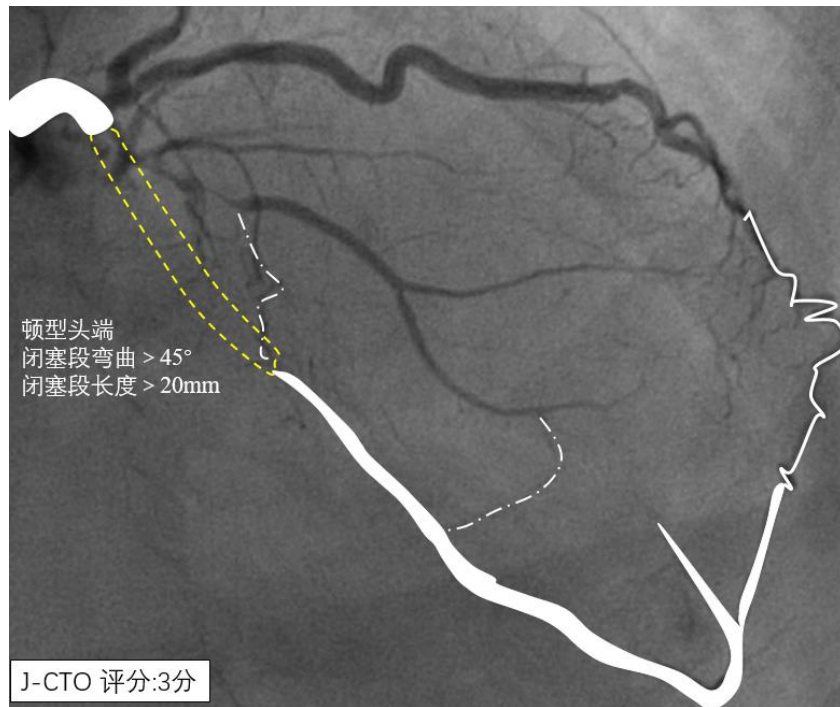
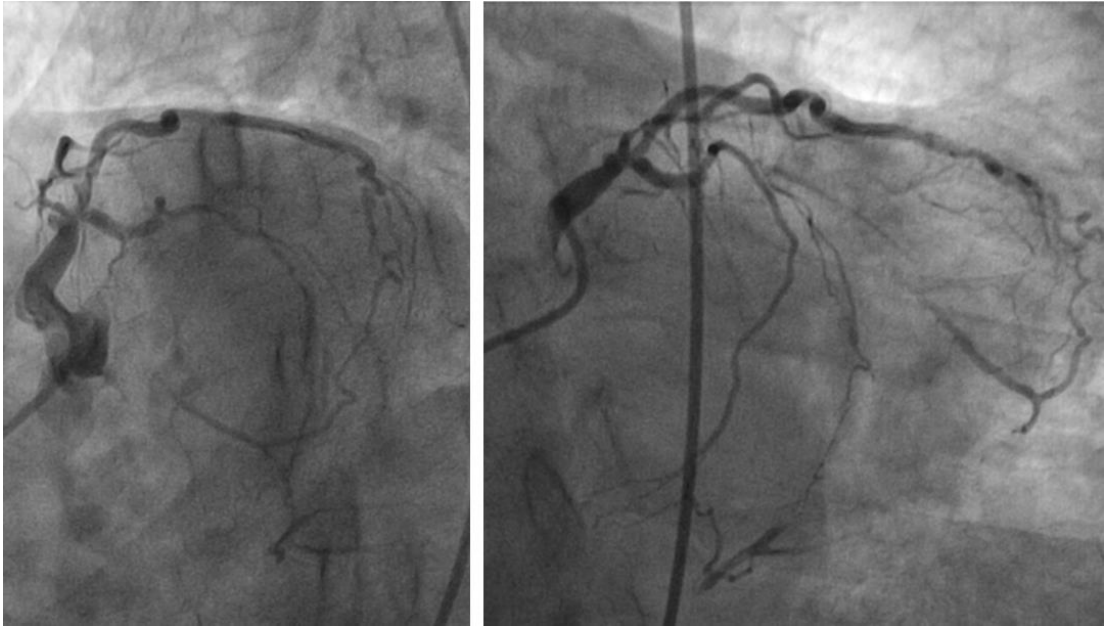
Equipment

Collateral Channels

CTO Technology

## CASE 05

- 男性, 81 岁, 胸痛 1 月余
- 高血压(+), 糖尿病(+), LVEF: 72%
- 冠脉造影: RCA(95-99%, 2017/02/23 PCI), LCX(CTO), 目标血管 **LAD(CTO)**



### 介入策略

器械

侧支循环选择

技术