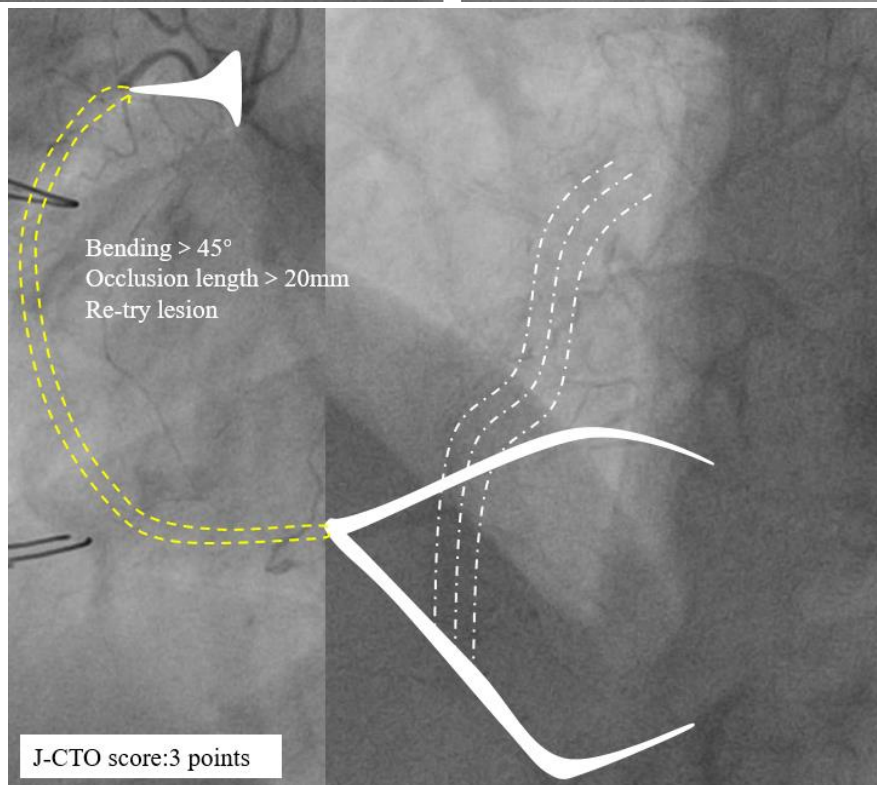
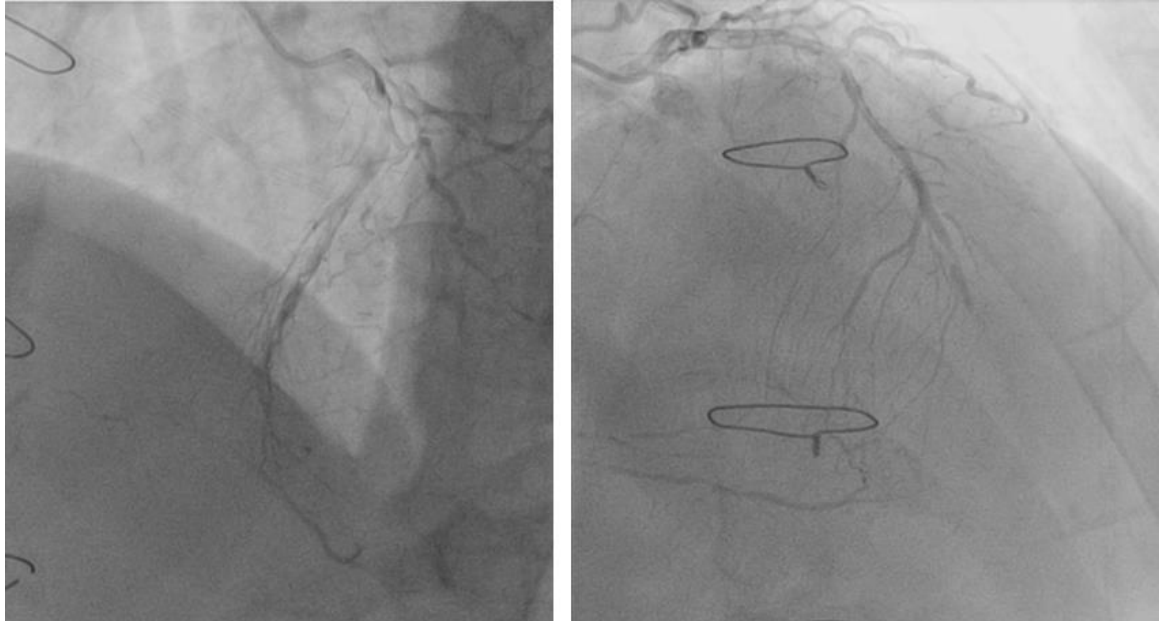


CASE 08

- Male, 54y, angina for 4 months
- HTN (+), DM (-), LVEF: None
- CAG: LAD70-90%, LCX (CTO, CABG history), **Target vessel RCA(CTO)**



Strategy

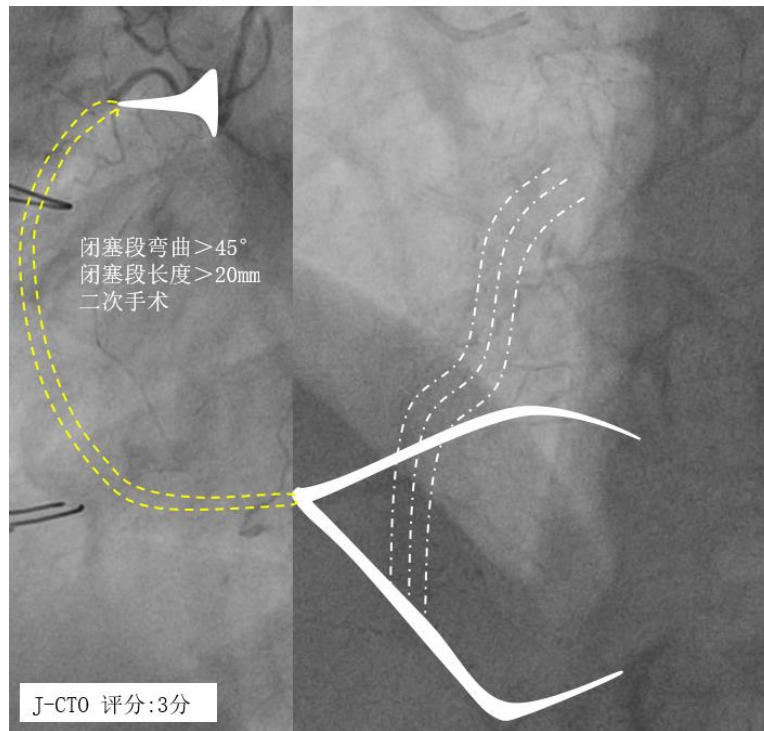
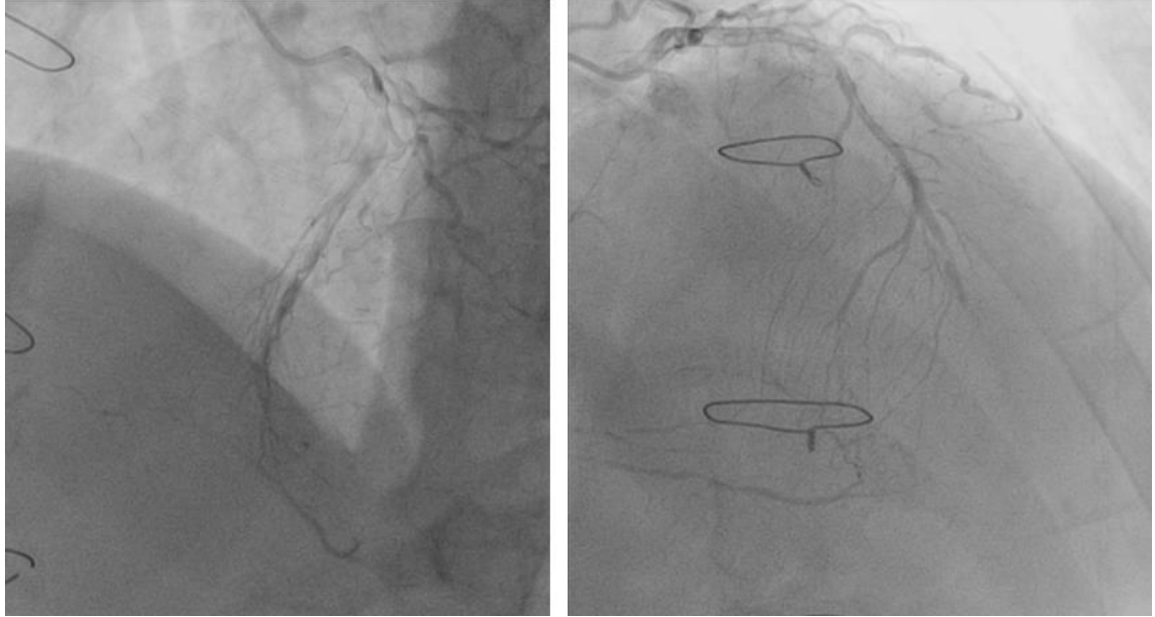
Equipment

Collateral Channels

CTO Technology

CASE 08

- 男性, 54y, 胸痛 4 月余
- 高血压(+), 糖尿病(-), LVEF: 无
- 冠脉造影: LAD70-90%, LCX (CTO, 冠脉搭桥术后), 目标血管 RCA (CTO)



介入策略

器械

侧支循环选择

技术